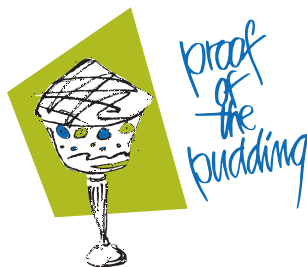




Your Beverage Catering Menu



Please take the time to familiarize yourself with our policies.

Proof of the Pudding has the exclusive catering contract with the Gwinnett Center and sole distribution rights of food and beverage within the facility and grounds.

MENUS

Menu selection and other details pertinent to your function should be submitted to the catering department at least one month prior to the function date. The Catering Sales Manager handling your event will assist you in selecting the proper menu items and arrangements to ensure a successful event. Because every event varies in purpose, detail and budget, we are happy to offer custom menu planning to meet your particular needs or theme.

GUARANTEES

A guaranteed number of attendees are required three (3) business days, before the date and time of the function (a business day is defined as Monday-Friday.) If the final guarantee is not received as stated, Proof of the Pudding reserves the right to charge for the number of persons specified on the contract. The guarantee is not subject to reduction after the guarantee deadline. We will over set by 5% or up to 50 people for your event. Actual over set number to be determined based on guarantee and discussion with Catering Sales Manager.

PRICING

Prices quoted do not include 20% Service Charge or 6% Sales Tax unless otherwise noted. Due to market fluctuations, prices are subject to change up to 60 days before the Event at which time confirmed prices may be quoted. The following prices are effective as of May 1, 2011.

LABOR CHARGES

Additional servers may be requested over and above our normal staffing minimum for your event. The charge is 25.00 per hour, per server, with a four-hour minimum. Charges for specialized services such as carvers, chefs, bartenders and cashiers are noted on the menus.

CONTRACTS & DEPOSITS

An initial non-refundable deposit in the amount noted on the addendum is due with a signed copy of the contract. When contracts are issued within 14 days of the event, we require 100% prepayment and execution of the contract. The signed contract, stated terms, addendums and specific banquet event orders constitute the entire agreement between the client and Proof of the Pudding.

BANQUET EVENT ORDER & PAYMENT

A signed copy of the banquet event order (BEO) outlining catering and event function requests must be returned to Proof of the Pudding 14 days before the event, along with your full payment. Your final guarantee is due three (3) business days before your function. Accepted methods of payments are cash, certified check, credit card and company check.

CANCELLATION

Cancellation of contracted services must be made in writing. If cancellation occurs after the contract is signed, all advance and all amounts paid as partial payment by Lessee are non-refundable. If the event is cancelled less than two weeks to 72 hours prior to the event, a fee of 50% of the total estimated services will be charged. Any event cancelled less than 72 hours prior to the event will incur 100% of the estimated charges.

If an event is cancelled with the mutual consent of Proof of the Pudding and client due to inclement weather or other mitigating circumstances, only the actual expenses of food and labor incurred by Proof of the Pudding during preparation will be charged.

HOLIDAY BUSINESS

Due to the demand of catering service during the holiday season, our deposit and contract policy is modified for this special time of the year. The Catering Sales Manager will discuss contract and deposit policies for the holiday season with you.

FOOD LIABILITY

Proof of the Pudding is responsible for the quality and freshness of its food. Due to the current health regulations, food may not be taken off premises after it has been prepared and served. However, as a participant with the Atlanta Community Food Bank, excess prepared food (not served) is donated to Atlanta's Table under regulated conditions and distributed to agencies feeding the needy.

BEVERAGE SERVICE

We offer a complete selection of beverages to complement your function. Please note that the State Liquor Control Board regulates alcoholic beverages and service. Proof of the Pudding, as licensee, is responsible for the administration of the regulations.

- No alcoholic beverages may be brought onto the premises from outside sources.
- We reserve the right to refuse alcoholic service to intoxicated or underage persons.
- No alcoholic beverages can be removed from the premises



beverage service

Proof of the Pudding is pleased to offer you a choice of full service bar plans with professional staff.

The following service options enable you to select the plan that best suits your event and budget.

There are three beverage service plans to choose from: Hosted by the Hour, Hosted by the Drink and Cash Bar.

Premium and Super Premium Plans includes liquor, imported and domestic beer, house wine, soft drinks, juices, bottled water, mixers, garnishes and beverage napkins.

Specialty Drinks and Super Premium Wines are available upon request.

Beer & Wine Plan includes domestic and imported beer, house wine, soft drinks and bottled water.

hosted by the hour

This Plan is based on the number of guests in attendance and on the number of hours the bars are open.

A minimum of two hours is required for this Plan.

This Plan includes the bartender at no additional charge.

BEER & WINE BAR

- First Hour 12.95 per person
- Second Hour 8.95 per person
- Additional Hour 4.95 per person

PREMIUM BAR

- First Hour 14.95 per person
- Second Hour 8.95 per person
- Additional Hour 6.95 per person

SUPER PREMIUM BAR

- First Hour 16.95 per person
- Second Hour 9.95 per person
- Additional Hour 7.95 per person

The quoted prices above do not include a 6% Georgia Sales Tax and a 3% Liquor Tax or a 20% Service Charge.

by the drink

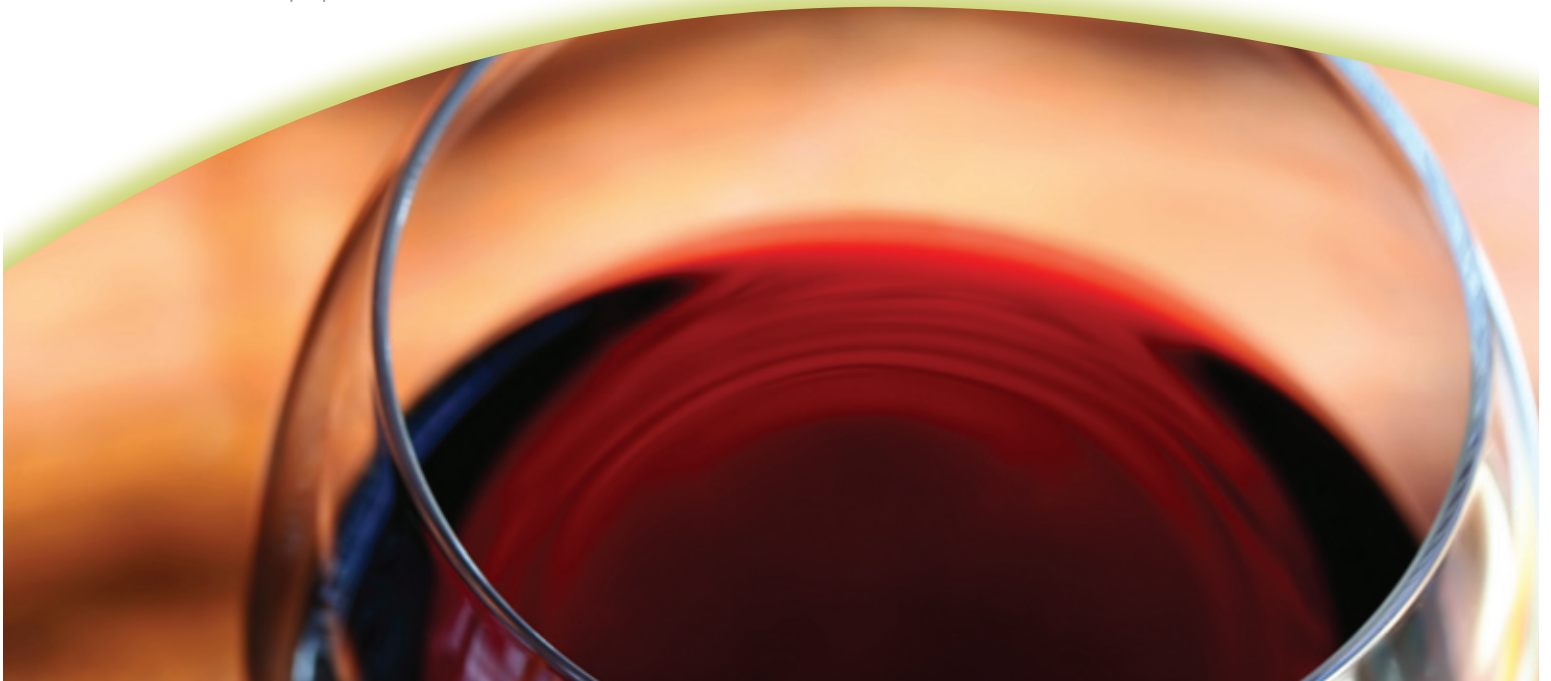
The quoted Hosted pricing below does not include a 6% Georgia Sales Tax and a 3% Liquor Tax or a 20% Service Charge.

Bar Consumption Minimum Guarantees apply. For each bar you request for your event, we require a minimum guarantee of 750.00 in sales revenue for up to two hours of service (each additional hour requires an additional 325.00 in sales revenue).

cash bar

The quoted Cash pricing below includes an 6% Georgia Sales Tax and a 3% Liquor Tax.

Bartender is required for this plan at an additional charge.





beverage service continued

BEVERAGE PRICING...

Specialty Cocktails Hosted 9.70 Cash 10.25

Super Premium Hosted 8.70 Cash 9.25

Premium Brands Hosted 7.70 Cash 8.25

House Wine Hosted 6.70 Cash 7.25

Imported Beer Hosted 6.70 Cash 7.25

Domestic Beer Hosted 5.70 Cash 6.25

Soft Drinks & Bottled Water Hosted 2.95 Cash 3.00

Fruit Juices Hosted 3.95 Cash 4.00

Super Premium Brands include: Absolut Vodka, Markers Mark Whiskey, Bombay Sapphire Gin, Jose Cuervo Tequila, Captain Morgan Rum, and Courvoisier Cognac

Premium Brands include: Van Gogh Vodka, Jack Daniels Whiskey, Bombay Gin, Dewars Scotch, Pepe Tequila, and Horne Rum

Domestic Beer: Bud Light, Budweiser, Miller Lite, Coors Light and Yuengling

Imported Beer: Heineken, Corona and Amstel Light

Wine: 3 Blind Moose White Zinfandel, Chardonnay and Cabernet Sauvignon

BARTENDERS

One Bartender is required for every 75-100 Persons for a minimum of four hours at 150.00 per Bartender. Each additional hour over four hours will be charged an additional 35.00 per hour.

ALCOHOLIC BEVERAGE POLICY...

The sale and service of all alcoholic beverages is regulated by the State Liquor Commission. Proof of the Pudding is responsible for the administration of those regulations. It is our policy, therefore, that no alcoholic beverages may be brought into or taken out of the Gwinnett Center for any function by our clients.

BEVERAGE SERVICE

We offer a complete selection of beverages to complement your function. Please note that the State Liquor Control Board regulates alcoholic beverages and service. Proof of the Pudding, as licensee, is responsible for the administration of the regulations.

- No alcoholic beverages may be brought onto the premises from outside sources.
- We reserve the right to refuse alcoholic beverage service to intoxicated or underage persons.
- No alcoholic beverages can be removed from the Premises.
- Minors (under the age of 21) are not permitted to consume alcoholic beverages.

Proof of the Pudding is dedicated to providing quality events that promote enjoyment and safety for everyone. That is best achieved when moderation is practiced.

